

**NEW PRODUCTS**

1<sup>st</sup> JULY 2024

23X.01

A yellow arrow pointing to the right, positioned to the left of the "NEW PRODUCTS" text.

NEW PRODUCTS

1<sup>st</sup> JULY 2024

23X.01

Focus on

ADVANCED TRADITIONAL SYSTEM **quid+**

**QUID MAGNETIC RELAY WITH 4 TERMINALS.**

The **Quid magnetic relay** for managing lights (innovative also in the more silent operation than market standards) is now also **available in the version with 4 terminals**. This new article offers greater freedom and flexibility of installation because the push button to control the load can now be wired with both phase (L) and with neutral (N). This new device is particularly suitable for refurbishments and can be used to replace traditional relays with push buttons wired with phase, without having to change the cables.

**Quid range.**

The range comprises the following retrofit devices:

- new **lights relay module with 4 terminals (03994)**
- lights relay module with 3 terminals (03991);
- lights relay module with **reset** (03992);
- lights relay module with **two sequential outputs** (03993);
- relay modules for roller shutters (03996) and with **centralised control** (03997);
- flush mounting electronic switch for roller shutter for Eikon, Linea, Arké and Plana;

- Quid for the control of lights combines the **super silent operation** of traditional electronic devices with the reliability of electromechanical ones;
- Quid for the control of lights features technology **patented** by Vimar and **certified by the University of Turin**, which works by utilising simple magnetic and electrical components.



These devices allow for **energy saving**, environmental respect and are designed to manage the control of lights also in a **centralised manner in traditional systems**. And in the version for roller shutters, they also enable the **centralised or grouped** control with load cut-off at the limit stop, saving the favourite position.

**Lights relay module with 4 terminals** for junction boxes or connector block boxes to be used behind the device

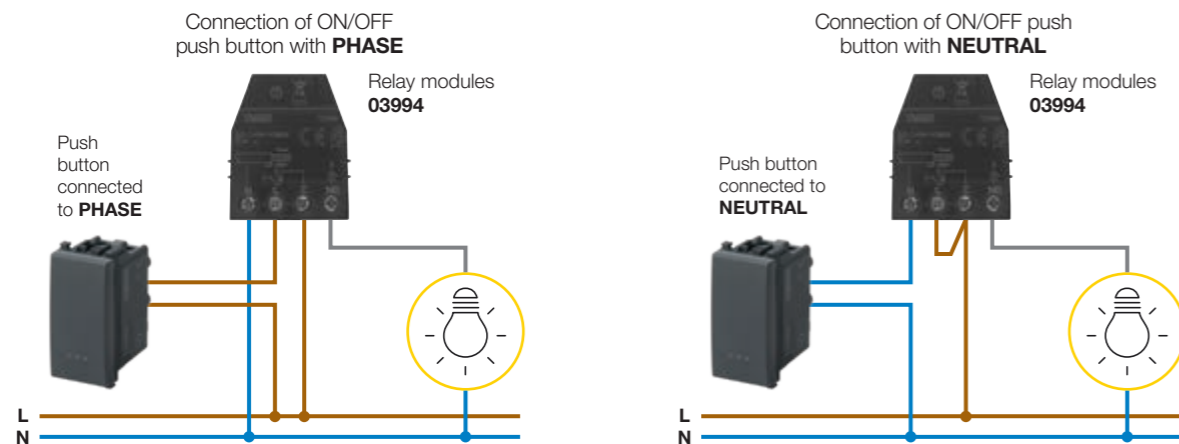


03994

**Characteristics:**

- product is **more silent** than traditional devices;
- product is **safe and efficient**, certified by the University of Physics of Turin;
- easy to install **without needing new cables**, using the existing ones.

**Wiring diagrams**



Focus on

SMART CLIMATE CONTROL



**SURFACE MOUNTING THERMOSTATS WITH NEW BLACK FINISH.**

Now also available in the stylish **black finish**, smart surface mounting thermostats feature **Wi-Fi** and **4G LTE** connectivity and stand out for their stylish design, clean-cut, understated silhouettes, reduced thickness and functional ergonomics. Easy to use thanks to their user-friendly controls, the thermostats come with a display that is **animated by a LED matrix** for easy reading even from a distance. Its brightness can be adjusted to three settings to offer maximum visual comfort at all times. Discrete and minimal, the display only provides an indication of the temperature which, thanks to a slight rocking motion of the front, can be easily set by briefly pressing the top or bottom of the thermostat.

They are remote controllable via the **View App**, which can be used both for configuration and also for management, in a simple and straightforward way.



02912.G (Wi-Fi)  
02913.G (4G LTE)  
Black version

02912 (Wi-Fi)  
02913 (4G LTE)  
White version



**Characteristics:**

- **connection technology: Wi-Fi and 4G LTE available;**
- simple configuration and management via the **View App**;
- **auxiliary input**, for sending push notifications, which can be customised via the **View App**;
- **multi-zone or multi-home management via View App**;
- **compatibility** with **Amazon Alexa**, **Google** voice assistants and with the **IFTTT protocol** (e.g. "I'm coming home" function);
- **side signalling LEDs**, indicating the operation and the connection state of the device discretely with different colours;
- installation: surface mounting and 2- and 3-module flush mounting boxes.



USB SOCKET OUTLETS

THE EVOLUTION OF USB POWER SUPPLY UNITS.

To keep up with market developments, Vimar has extended its line-up of flush mounting USB power supply units by introducing into the range new **type C USB socket outlets with the Power Delivery standard, USB-IF certified** to ensure universal compatibility, superior performance, safety and quality. The new flush mounting USB socket outlets perfectly match the design of the Eikon, Linea, Arké and Plana wiring series, as they have been devised to simplify everyday life, allowing electronic devices such as smartphones and tablets to be charged quickly, and PCs too, thanks to the 60 W version, with the utmost speed.



USB socket outlets for the Eikon, Linea, Arké, Idea, Plana and Neve Up series.

**New**

Compact with USB A+C - 15 W - 1 module



**New**

Compact with USB C - 25 W - 1 module

**Power Delivery**



Powerful USB C - 60 W - 2 modules

**Power Delivery**



Comprehensive range of power supply units with USB socket outlets

Modules	Single output				Double output			Mixed output	
	1	2	1	2	1	2	1	2	
Series	Eikon / Linea Arké / Plana Neve Up	Eikon / Arké Plana / Neve Up	Eikon / Linea Arké / Plana	Eikon / Linea Arké / Plana	Eikon / Linea Arké / Plana Neve Up	Eikon / Arké Plana	Eikon / Arké Plana	Eikon / Linea Arké / Plana Neve Up	Eikon / Arké Plana
Article	<b>New</b> xx292.C.25xx	xx292xx	xx298.60xx	xx298xx	xx292.CCxx	xx295.CCxx	xx295xx	<b>New</b> xx292.AC.15xx	xx295.ACxx
USB port	C	A	C	C	C+C	C+C	A+A	A+C	A+C
Power	25 W	7,5 W	60 W	30 W	15 W	15 W	10,5 W	15 W	15 W
Charging protocols	Power Delivery 3.1 USB C Mode 3 A Battery Charge 1.2	Battery Charge 1.2	Power Delivery 3.1 USB C Mode 3 A Battery Charge 1.2	Power Delivery 3.0 USB C Mode 3 A Battery Charge 1.2	USB C Mode 3 A Battery Charge 1.2	USB C Mode 3 A Battery Charge 1.2	Battery Charge 1.2	USB C Mode 3 A Battery Charge 1.2	USB C Mode 3 A Battery Charge 1.2
Application									

German standard socket outlet with USB for the Eikon, Linea, Arké, Idea, Plana and Neve Up series.

**New**

German standard socket outlet with USB C - 18 W - 2 modules

**Power Delivery**

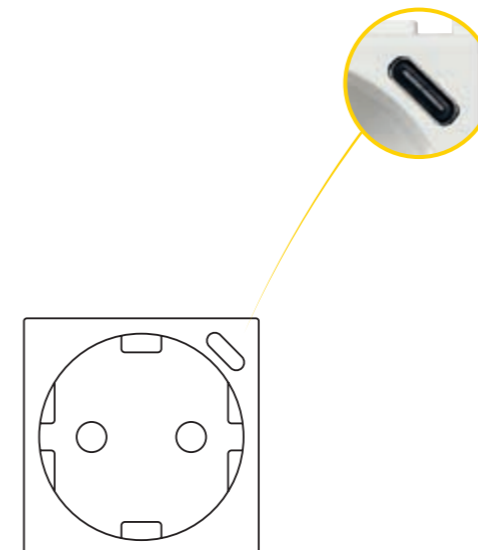


The new range of current socket outlets with USB socket outlets.

▶ A German standard socket outlet (Schuko type) with USB C Power Delivery **18 W** for rapid charging of Smartphones and Tablets. Ideal for bedside, desktop and kitchen countertop applications. Especially suitable in countries which adopt the multi-module standard because it enables the functional updating of the system without masonry work.

German standard socket outlet with USB C

New **type C** USB socket outlet **built** into the **German standard socket outlet**, for instance **to charge** a smartphone while **at the same time powering** another device. Designed to save space by combining two functions in a single device.



Focus on

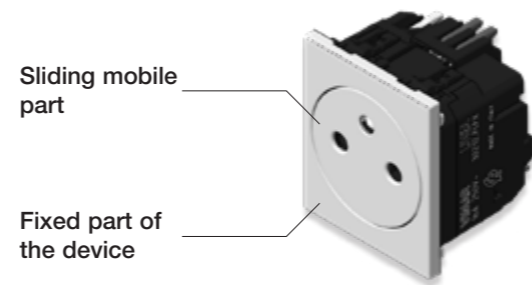
FRENCH STANDARD SOCKET OUTLETS

**NEW FLUSH-FITTING FRENCH SOCKET OUTLETS.**

Eikon, Linea and Arké have extended their line-up with new SICURY 2P+T 16 A 250 V~ French standard flush-fitting **socket outlets**. Available in the Eikon (grey, white and Next), Linea (black, white and canvas) and Arké (grey, white and Metal) colour variants. Thanks to a **patented system** for sliding the mobile part, which also incorporates the Sicury patent, it ensures the seamless shifting of the well. The socket outlets are fitted with automatic two-position stable terminals with **Smartfix tabs**, to accommodate the needs of the French market.

BREVETTATO  
**VIMAR**

**FRENCH SOCKET OUTLET - 2 modules**



BY-ME PLUS  
AND WELL-CONTACT PLUS



**NEW BASIC TP KIT FOR BY-ME PLUS/KNX SYSTEMS.**

This kit is designed to expand Vimar's building automation solutions, from high-end residential to large-scale accommodation facilities. Containing a By-me Plus gateway and a By-me/KNX router, it makes it possible to interface a **By-me Plus system (which can be quickly programmed with the View Pro App)** with the building infrastructure based on KNX standard products with backbone on TP cable. The highest level of security in data transmission is ensured thanks to the **KNX Secure** protocol. The router makes it possible to create solutions for **increased** efficiency and comfort using By-me Plus technology, KNX technology for integration with third-party systems (e.g. HVAC) and supervision from the reception via the **Well Contact Suite** software.

**Gateway IoT light**  
4 DIN modules



**OK01410.02**  
By-me Plus GRMS TP basic room kit

**Router By-me/KNX**  
2 DIN modules



**Alimentatore**  
2 DIN modules



**Characteristics:**

- IoT light gateway for integration, configuration and maintenance, both locally and remotely, of By-me Plus home automation system devices, via the Ethernet (IP);
- connection of up to 32 By-me Plus devices;
- router for integration of By-me 3.0 (By-me Plus) islands on KNX Secure protocol systems and TP BUS KNX connection;
- management of up to 500 DataPoints;
- power supply unit with 29 VDC 400 mA output, 230 V~ 50/ 60 Hz power supply, with decoupling coil;
- devices for DIN rail installation (60715 TH35).

Focus on

WELL-CONTACT PLUS

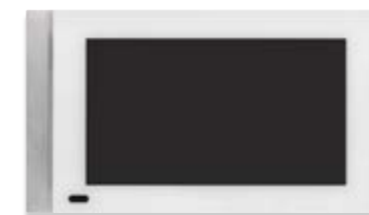


**5" TOUCH SUPERVISOR**

This elegant and compact 5" touch screen with a thickness of just 11.5 mm for Well-contact Plus building automation system with KNX protocol, can be installed vertically and horizontally in 2- and 3-module boxes and is designed to supervise an entire environment in all its functions owing to the multiple customisable pages (up to 16). It is equipped with a proximity sensor to wake it up from stand-by, differentiated day/night brightness and customisable icons.



**01560**  
black



**01560.B**  
white

**Characteristics:**

- programming with ETS software without the aid of additional tools;
- integrated temperature probe;
- available in two finishes, black and white, both with details in satin finish aluminium;
- installation: vertical and horizontal surface mounting in 2- and 3-module boxes;
- dimensions: 148.8 x 86 x 11.5 mm.

**KNX SECURE CONTROLS**

New **controls** to control lights, roller shutters, scenarios, etc., developed on **KNX Secure** protocol. They stand out for the improved backlighting management - in fact the colour of the LEDs can be differentiated according to the **status of the load**, what's more the brightness can vary between **day and night**. The new 2-module controls have a built-in temperature probe which allows the sending of value on the KNX BUS. To be completed with Eikon, Linea, Arké or Plana 1- or 2-module interchangeable half-button caps.

**4 button controls - 2 modules**

**EIKON ARKE' PLANA**      **EIKON EXE'**



**01583**      **01583.AX**  
For Flat and Tondo controls

**LINEA**



**30583**

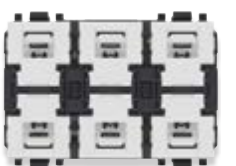
**6 button controls - 3 modules**

**EIKON ARKE' PLANA**      **EIKON EXE'**      **LINEA**



**01588**      **01588.AX**  
For Flat and Tondo controls

**LINEA**

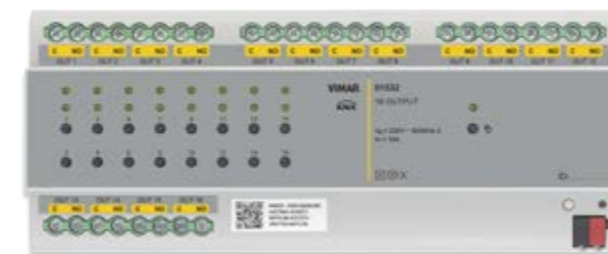


**30588**

**NEW KNX SECURE 16-OUTPUT ACTUATOR**

Multi-function DIN rail actuator (60715 TH35), 12 modules. It features 16 outputs for controlling lights, roller shutters (both **AC** and **DC**), solenoid valves and fan coils (up to 4) and is fitted with push buttons for the **manual load activation**.

**Actuator**



**01532**

**Characteristics:**

- functions for the manual control of outputs: lights, scenarios, logic functions, AC/DC roller shutters, 3-speed fan coils and valves;
- 16 independent NO relay outputs (230 VAC / 30 VDC, 10 A);
- BUS 30 VDC 9 mA power supply;
- installation on DIN rail (60715 TH35);
- dimensions: 12 modules size 17.5 mm.

NETSAFE: FTTH STRUCTURED WIRING SYSTEM

**KEYSTONE ADAPTORS FOR LINEA SERIES AND OPTICAL COMPASS**

To foster an ultra wide band fibre optic data network infrastructure, a new optical compass is available, to be completed with the Linea adaptors with standard Keystone coupler, to form socket outlets ready to be connected to the household fibre optic network.



30339.K...



03100.KSC

- ▶ Linea adaptors for Keystone connectors: 30339.KG (black), 30339.KB (white) e 30339.KC (canvas).
- ▶ Mono-modal compass 9/125 µm, type SC/APC, with Keystone coupler.

**EDVEX** VIDEOCITOFONIA

**ROXIE VIDEO ENTRANCE PANEL: VIRTUAL CREDENTIALS FOR ACCESS CONTROL**

Access control of the **Roxie** video entrance panel, which can be activated with **tags** (digital proximity keys) or with **transponder cards**, can now also be managed using the **View Key** App, with which the user can open the entrances controlled by the outdoor station directly from their smartphone.

From the View portal, which can be accessed via a browser from any PC or tablet, the accommodation facility manager can create new users, enter how long guests are staying for (check-in, check-out) and send e-mails containing virtual access keys to be activated in the App. The same portal can also be used to manage the validity periods of accesses via physical cards enrolled in the system and also consult the access logs. After receiving the e-mail invitation, the customer then uses the **View Key** App to activate their digital key ring clearly and effortlessly. Operation is a breeze: thanks to Bluetooth connectivity, simply approach the entrance panel with your smartphone to activate the opening of the entrance controlled by the outdoor station in one simple move.



View Key



**EDVEX** TVCC



**NEW NVR AND NEW IP CAMERAS**

The Elvox CCTV line-up has been extended with a new NVR with 16 channels in 8 Mpx resolution, compatible with all the picture management functions of the Fisheye cameras for facial recognition with database enabling the search for a specific face in recordings, also from the By-camera App.

Four new Plus cameras developed on IP technology with 6 Megapixel resolution are also available. Specifically, two cameras with motor-driven varifocal lens (Bullet and Dome) and Mini Dome camera, all supplied with new video analysis functions, such as:

- **vagabond:** to signal subjects remaining inside a specific area;
- **alarm on parking:** designed to define an area in the frame where parking is not permitted, such as in a no parking area or a restricted access area;
- **audio detection:** to signal sudden noises, e.g. glass shattering;
- **definition of the size of targets** (minimum and maximum), to limit false alarms, for instance excluding all small animals from detection a priori;
- **Plus video analysis functions:** target detection and classification of metadata for simplified event search.

In addition, the new Fisheye 6 Mpx camera, with IP67 protection degree, featuring advanced video analysis functions, such as:

- **detection of people on pre-defined area intrusion;**
- **detection of people on pre-defined line crossing;**
- **counting the number of people** who enter the area or cross the established line;
- **video anomaly warnings**, in the case of unforeseen parameter changes (e.g. colour);
- **density of the crowd present** in a given area;
- **heat map of areas** with the greatest concentration of people.

All the cameras conform to the **NDAA** (National Defense Authorization Act) standard and can be connected to the By-camera App simply using a QR code, similarly to the NVRs, they enable the firmware update by the installer to implement new features, with system backup in the event of failure.



46NVR.16F



4621.2812GAE



4622.2812GAE



4624.028GAE



46234.010GA



4621.2812DDT



46910.H22B



46910.H10B

**Range:**

- ▶ **16-channel NVR (46NVR.16F)** with 8 Mpx recording resolution, 16 Real Time channels, professional 2 TB HDD, 4K HDMI output and manageable via web interface, CCTV Manager and By-camera App.
- ▶ **IP Plus Bullet camera (4621.2812GAE)**, Day & Night, colour, 6 Mpx resolution (3296 x 1856 pixel), 2.8-12 mm motor-driven varifocal lens, Smart IR up to 70 m, PoE or 12 VDC power supply, slot for SD-Card 256 GB max, built-in microphone, IP67 protection degree.
- ▶ **IP Plus Dome camera (4622.2812GAE)**, Day & Night, colour, 6 Mpx resolution (3296 x 1856 pixel), 2.8-12 mm motor-driven varifocal lens, Smart IR up to 30-50 m, PoE or 12 VDC power supply, slot for SD-Card 256 GB max, built-in microphone, IP67 and IK10 protection degree.
- ▶ **IP Plus Mini Dome camera (4624.028GAE)**, Day & Night, colour, 6 Mpx resolution (3296 x 1856 pixel), 2.8 mm fixed focus lens, Smart IR up to 20 m, PoE or 12 VDC power supply, built-in microphone, IP67 and IK10 protection degree.
- ▶ **Telecamera Fisheye IP Plus (46234.010GA)**, a colori Day & Night, risoluzione 6 Mpx (3296 x 1856 pixel), ottica fuoco fisso 1,65 mm con visione a 360°, Smart IR fino 20 m, alimentazione PoE o 12 Vdc, microfono integrato, interfaccia RS485 (protocolli Pelco P/D), grado di protezione IP67.

**Other articles:**

- ▶ Deterrent IP Plus Bullet camera **(4621.2812DDT)**, with red and blue LEDs and siren or message acoustic signals, 4 Mpx resolution and 2.8-12 mm motor-driven varifocal lens, **colour viewing in the dark** with white or b/w LEDs with IR up to 40 m, PoE power supply, slot for SD-Cards up to 256 GB, Real WDR, ROI, 3D-DNR, mask, motion, HLC, BLC, Defog and video analysis functions.
- ▶ 10" HD monitor **(46910.H10B)** with a new design with adjustable table bracket and surface mounting, metal case, 2 HDMI, 1 VGA and 1 BNC inputs with direct connection for AHD cameras up to 5 Mpx, including speakers.
- ▶ 22" Full-HD monitor **(46910.H22B)**, with a new frameless design supplied with table bracket and ready for surface mounting with Vesa fixing, HDMI and VGA inputs, speakers.

Article	Description	Min. q.ty order	Marks (see page 13)	Available for sale from:
<b>EIKON</b>				
▲ 01583	4-button KNX Secure control 2M	1	27	
▲ 01583.AX	4-button KNX Secure control Flat 2M	1	27	
▲ 01588	6-button KNX Secure control 3M	1	27	July 2024
▲ 01588.AX	6-button KNX Secure control Flat 3M	1	27	
▲ 03994	4-terminal relay-module Quid 10AX	10	1	
▲ 20208.USB	2P+E 16A DE SICURY outlet +USBC 15 grey	10		
▲ 20208.USB.B	2P+E 16A DE SICURY outlet +USBC 15 white	10		October 2024
▲ 20208.USB.N	2P+E 16A DE SICURY outlet +USBC 15 Next	10		
▲ 20212.FL.FX	Flat 2P+E16A FR SICURY outlet screwless	20		
▲ 20212.FL.FX.B	Flat 2P+E16A FR SICURY outlet screwless	20		
▲ 20212.FL.FX.N	Flat 2P+E16A FR SICURY outlet screwless	20		
▲ 20292.AC.15	A+C-USB power unit 15W 5V 1M grey	10	1	
▲ 20292.AC.15.B	A+C-USB power unit 15W 5V 1M white	10	1	July 2024
▲ 20292.AC.15.N	A+C-USB power unit 15W 5V 1M Next	10	1	
▲ 20292.C.25	PD C-USB power unit 25W grey	10	1	
▲ 20292.C.25.B	PD C-USB power unit 25W white	10	1	
▲ 20292.C.25.N	PD C-USB power unit 25W Next	10	1	
<b>LINEA</b>				
▲ 03994	4-terminal relay-module Quid 10AX	10	1	July 2024
▲ 30208.USBB	2P+E 16A DE SICURY outlet +USBC 15 white	10		
▲ 30208.USBC	2P+E 16A DE SICURY outlet +USBC 15 canva	10		October 2024
▲ 30208.USBG	2P+E 16A DE SICURY outlet +USBC 15 black	10		
▲ 30212.FLFXB	Flat 2P+E16A FR SICURY outlet screwless	20		
▲ 30212.FLFXC	Flat 2P+E16A FR SICURY outlet screwless	20		
▲ 30212.FLFXG	Flat 2P+E16A FR SICURY outlet screwless	20		
▲ 30292.AC15B	A+C-USB power unit 15W 5V 1M white	12	1	
▲ 30292.AC15C	A+C-USB power unit 15W 5V 1M canvas	12	1	
▲ 30292.AC15G	A+C-USB power unit 15W 5V 1M black	12	1	
▲ 30292.C25B	PD C-USB power unit 25W white	12	1	
▲ 30292.C25C	PD C-USB power unit 25W canvas	12	1	
▲ 30292.C25G	PD C-USB power unit 25W black	12	1	July 2024
▲ 30324.B	Israeli phone jack white	10		
▲ 30324.C	Israeli phone jack canvas	10		
▲ 30324.G	Israeli phone jack black	10		
▲ 30339.KB	Keystone adaptor white	2		
▲ 30339.KC	Keystone adaptor canvas	2		
▲ 30339.KG	Keystone adaptor black	2		
▲ 30583	4-button KNX Secure control 2M	1	27	
▲ 30588	6-button KNX Secure control 3M	1	27	

▲ New article

Article	Description	Min. q.ty order	Marks (see page 13)	Available for sale from:
<b>ARKÉ</b>				
▲ 01583	4-button KNX Secure control 2M	1	27	
▲ 01588	6-button KNX Secure control 3M	1	27	July 2024
▲ 03994	4-terminal relay-module Quid 10AX	10	1	
▲ 19208.USB	2P+E 16A DE SICURY outlet +USBC 15 grey	10		
▲ 19208.USB.B	2P+E 16A DE SICURY outlet +USBC 15 white	10		October 2024
▲ 19208.USB.M	2P+E 16A DE SICURY outlet +USBC 15 Metal	10		
▲ 19212.FL.FX	Flat 2P+E16A FR SICURY outlet screwless	20		
▲ 19212.FL.FX.B	Flat 2P+E16A FR SICURY outlet screwless	20		
▲ 19212.FL.FX.M	Flat 2P+E16A FR SICURY outlet screwless	20		
▲ 19292.AC.15	A+C-USB power unit 15W 5V 1M grey	10	1	
▲ 19292.AC.15.B	A+C-USB power unit 15W 5V 1M white	10	1	
▲ 19292.AC.15.M	A+C-USB power unit 15W 5V 1M Metal	10	1	July 2024
▲ 19292.AC15AB	A+C-USB power unit 15W5V1M antibact grey	10	1	
▲ 19292.AC15ABB	A+C-USB power unit 15W5V1M antibactwhite	10	1	
▲ 19292.C.25	PD C-USB power unit 25W grey	10	1	
▲ 19292.C.25.B	PD C-USB power unit 25W white	10	1	
▲ 19292.C.25.M	PD C-USB power unit 25W Metal	10	1	
<b>IDEA</b>				
▲ 03994	4-terminal relay-module Quid 10AX	10	1	
▲ 16292.AC.15	A+C-USB supply unit 5V 3A 15W 1M grey	10		July 2024
▲ 16292.AC.15.B	A+C-USB supply unit 5V 3A 15W 1M white	10		
<b>PLANA</b>				
▲ 01583	4-button KNX Secure control 2M	1	27	
▲ 01588	6-button KNX Secure control 3M	1	27	July 2024
▲ 03994	4-terminal relay-module Quid 10AX	10	1	
▲ 14208.USB	2P+E 16A DE SICURY outlet +USBC 15 white	10		
▲ 14208.USB.SL	2P+E 16A DE SICURY outlet+USBC 15 Silver	10		October 2024
▲ 14292.AC.15	A+C-USB power unit 15W 5V 1M white	10	1	
▲ 14292.AC.15.SL	A+C-USB power unit 15W 5V 1M Silver	10	1	
▲ 14292.C.25	PD C-USB power unit 25W white	10	1	July 2024
▲ 14292.C.25.SL	PD C-USB power unit 25W Silver	10	1	
<b>NEVE UP</b>				
▲ 03994	4-terminal relay-module Quid 10AX	10	1	July 2024
▲ 09208.USB	2P+E 16A DE SICURY outlet +USBC 15 white	10		
▲ 09208.USB.CM	2P+E 16A DE SICURY outlet+USBC 15 carbon	10		October 2024
▲ 09292.AC.15	A+C-USB power unit 15W 5V 1M white	1		
▲ 09292.AC.15.CM	A+C-USB power unit 15W 5V 1M Carbon Matt	1		
▲ 09292.C.25	PD C-USB power unit 25W white	1		July 2024
▲ 09292.C.25.CM	PD C-USB power unit 25W carbon m	1		

▲ New article

Article	Description	Min. q.ty order	Marks (see page 13)	Available for sale from:
<b>LINEA CLASSICA</b>				
▲ 03994	4-terminal relay-module Quid 10AX	10	1	July 2024
▲ 10292.AC.15	A+C-USB supply unit 5V 3A 15W 1M	1		November 2024
<b>SMART CLIMATE CONTROL</b>				
▲ 02912.G	Surf.Wi-Fi connected thermostat black	1		September 2024
▲ 02913.G	Surface LTE thermostat black	1		September 2024
<b>BUILDING AUTOMATION: WELL-CONTACT PLUS (KNX)</b>				
▲ 01532	KNX Secure actuator 16 OUTS 250V 10AX	1	27	
▲ 01560	KNX 5in touch screen black	1	27	October 2024
▲ 01560.B	KNX 5in touch screen white	1	27	
▲ 01583	4-button KNX Secure control 2M	1	27	
▲ 01583.AX	4-button KNX Secure control Flat 2M	1	27	
▲ 01588	6-button KNX Secure control 3M	1	27	
▲ 01588.AX	6-button KNX Secure control Flat 3M	1	27	July 2024
▲ 0K01410.02	Room basic kit - GRMS TP By-me	1		
▲ 30583	4-button KNX Secure control 2M	1	27	
▲ 30588	6-button KNX Secure control 3M	1	27	
<b>NETSAFE</b>				
▲ 03100.KSC	Mono 9/125SC opticfibre Keystone adapter	1		
▲ 30339.KB	Keystone adaptor white	2		July 2024
▲ 30339.KC	Keystone adaptor canvas	2		
▲ 30339.KG	Keystone adaptor black	2		
<b>ELVOX CCTV</b>				
▲ 4621.2812GAE	IP Bullet Plus motorcam-6Mpx 2,8-12mm	1		July 2024
▲ 4622.2812GAE	IP Dome Plus motorcam-6Mpx 2,8-12mm IK10	1		
▲ 46234.010GA	IP Fisheye Plus cam -6Mpx FF 1,65mm 360°	1		December 2024
▲ 4624.028GAE	IP MiniDome Plus cam- 6Mpx FF 2,8mm IK10	1		
▲ 46NVR.16F	16CH 8Mpx H.265 HDD 2TB NVR	1		July 2024

Marks and certifications

Marks and certifications

1 IMQ - Italy Istituto Italiano del Marchio di Qualità	2 IMQ - Italy Marchio IMQ-CIG per gli apparecchi utilizzatori a gas e relativi accessori	3 IMQ - Italy Certificato con Sorveglianza IMQ	4 NF - France Laboratoire Central des Industries Electriques	5 SEV - Switzerland Electrosuisse	7 INGCER - Chile Certificación de productos eléctricos y combustibles
8 ASTA United Kingdom Intertek	9 VDE - Germany Testing and Certification Institute	12 AENOR - Spain Spanish Association for Standardisation and Certification	13 SNI - Indonesia Multicert Global Indonesia	14 TSE - Turkey Turkish Standards Institution	15 CCC - China China Quality Certification Center
16 UL - USA Underwriters Laboratories Inc.	17 ENEC IMQ European Norms Electrical Certification	18 ENEC VDE European Norms Electrical Certification	19 NOM - Mexico Ance - Asociacion de Normalizacion y Certificacion	21 IMQ - Italy Marchio IMQ Sistemi di Sicurezza	22 ENEC ÖVE European Norms Electrical Certification
24 FORCE Technology Denmark	27 KNX Association	28 NSW - Australia NSW Fair Trading	29 QCERT - Colombia Organismo de Certificación	30 G-Mark - GCC Gulf Standardization Organization	31 TISI - Thailandia Thai Industrial Standards Institute
34 PSE - Japan Japan Electrical Safety & Environment technology Laboratories	35 RCM - Australia Regulatory Compliance Mark	36 ISI - India Bureau of Indian Standards			



**Energia Positiva. Insieme**

